



# Key to the Egyptian Pyramids: The Holy Grail of Archaeology

Paul T E Cusack\*

23 Park Ave, Saint John, NB E2J 1R2, Canada

\*Corresponding author: Paul T E Cusack, 23 Park Ave, Saint John, NB E2J 1R2, Canada

Received: 📅 February 17, 2025

Published: 📅 February 25, 2025

## Abstract

In this paper we show that the Pyramids of Egypt were built on the parameters of Astrotheology. The Great Pyramid was constructed of granite cut so that it could detect the Superforce. To have sympathetic vibrations, a hydraulic compression wave of a frequency of the Superforce was constructed within the Pyramid. In short, the Great Pyramid was not a tomb but a wave detector build to verify experimentally the Superforce ( $-8/3=-2.667$ ).

## Introduction

According to Edward Malkowski, the Holy Gail of Archaeology is to figure out the purpose of the Egyptian Pyramids. Well, the purpose is that there were a testament in stone to Astrotheology.

Using a plot of the Golden Mean Parabola ( $t^2-t-1=E$ ), and its derivative ( $2t-1=dE/dt$ ), and applying our knowledge of trigonometry, similar triangles, and Pythagoras' Theory, we can calculate that the pinnacle chamber within the pyramids yields the GMP Figure 1.

I don't know what the chambers were used for, most likely as a tomb for a Pharaoh. But the dimesons and angles are from the

parameters of Astrotheology. The Egyptian Pyramids embodied AT Math -the highest achievement of human endeavor Figure 2. The only place it's a secret is in the Jewish Kabbalah. All the other cultures shared the information [1]. We've shown in a previous paper that the knowledge may have come from the proto-Jews from the foot of the Himalayas, the Harappans from 10,000 BCE. The word Pharaoh comes from Hara.  $Pi="P"$  = Pharaoh. The Pharaoh was a god. Moses was educated in the Pharaoh's household. Moses recorded Astrotheology in Genesis. It was rediscovered in January 2016 by this author and thoroughly published, yet most scholars haven't heard of it.

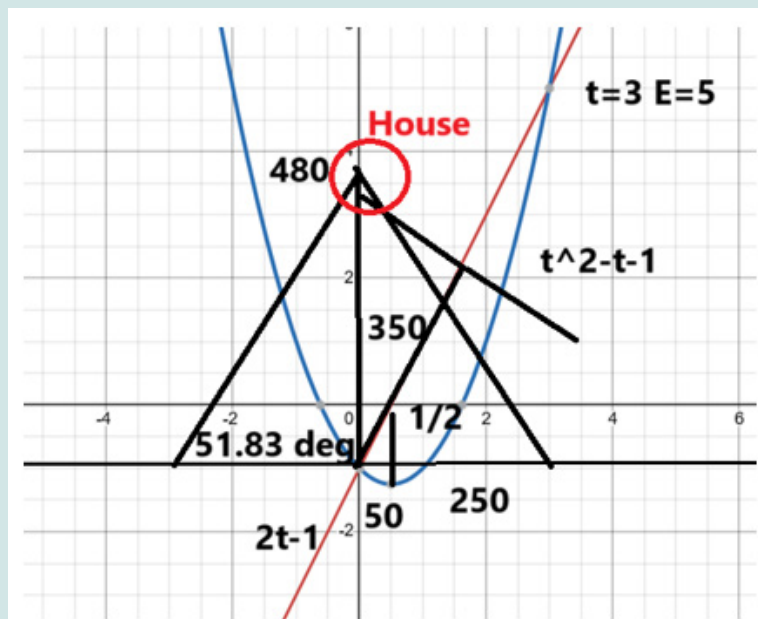


Figure 1: The GMP and Its Derivative with the Pyramid overlaying.

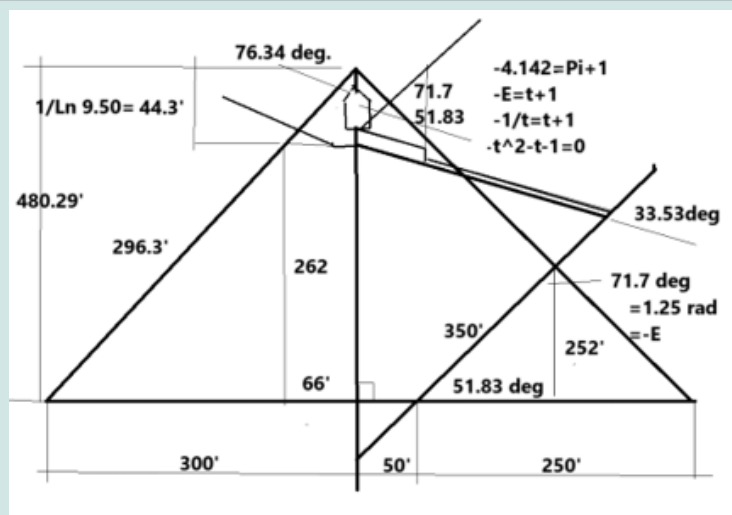


Figure 2: The Schematic (Not to Scale) of the Pyramid. at Giza showing internal shafts. There are other constants such as  $1.33 = \text{space}$  and  $1.284 = \text{Universal Vector}$  etc that are not shown. It would be a good exercise for the High School Math student.

$38.1-23.265=14035$

$=1/0.38622 \text{ rads}$

$\int 1 \rightarrow 2 \text{ Ln } t = 0.38629$

The People who built the Pyramids knew

- Integral Calculus,
- Cusack  $M = \text{Ln } t$ ,
- Einstein's  $E = Mc^2$ ;

- Planck's  $E = \hbar v$ ,
- the speed of light  $c = 2.997$ ,
- the Earth's coordinate system degrees North of the Equator,
- the tilt of the Earth  $23.266 \text{ deg}$ , and the freq of the universe  $= 1/\pi$ .

The knew geometry, Calculus, algebra, GMP, Quadratic Equation, SI System (Metric)  $1 \text{ kg} = 2.2 \text{ lbs}$ , and the Gravitations constant Pressure  $= 3300 \text{ psi} = 6.67 \text{ Kg/in}^2$ , and Basic Chemical Equation, Physics, Math and Biology Figure 3.

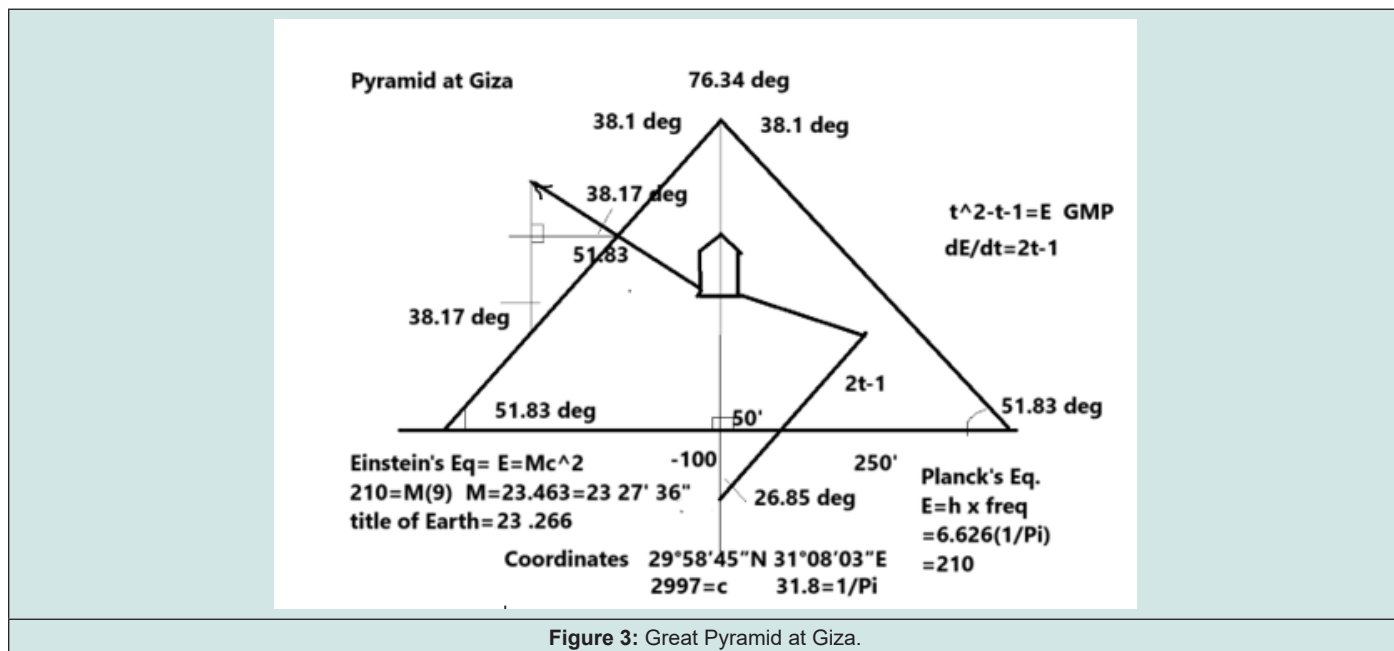


Figure 3: Great Pyramid at Giza.

Heat Transfer: Pulsating of the Superforce

I noticed that the plastic tablecloth was rhythmically moving as the heat from a base board heater below flowed upward as the cold air fell into the lower position. I thought, perhaps the Superforce pulsates like that tablecloth [2].

$$PV = -nRT^\circ$$

$$T^\circ = PV/nR$$

$$= (8/3) s / (6.022) (8.31)$$

$$T^\circ = 532s$$

$$s = t = KE = 1/2 Mv^2 = 1/2(4)(9) = 18$$

$$T^\circ = 532 \times 18 = 9576$$

$$0.9576 \times 273.15 = 2615.6 = 511 = Me-$$

$$2.61561/2 = 1.6173 \approx t$$

$$5.11^2 - 5.11 - 1 = 20.002 = E = 1/F$$

$$F = 0.05 = \sin \theta$$

$$\theta = 30^\circ = \pi/6$$

Teflon is capable of enduring temperatures up to 260 C

$$260 + 273.15 = 533C$$

$$PV = nRT$$

$$(8/3) / [6.022] (8.31) = 532.8 = 533 C$$

So, it is heat transfer that makes the Superforce pulsate.

$$PV = nRT^\circ$$

$$8/3(V/A) = 6.022(8.31) (532.8K)$$

$$V/A = 1.000$$

$$Vol = 4/3\pi R^3$$

$$1.0 = 4/3\pi R^3$$

$$R = 133 = 4/3 = s$$

According to Malkowski, Cadman built a compression pump using the same setup as inside the Great Pyramid [3]. The Pyramids were working models of the pulsating Superforce. That is the reason for the shafts inside the Pyramids. [1] pg 164

$$F = Mg$$

$$F/A = MG/A$$

$$3300 \text{psi} = Pr \text{ of compression wave}$$

$$3300/2200 \text{lbs/kg} = 1.5$$

$$F/A = 1.5$$

$$(8/3)/A = 1.5$$

$$A = 1.7777 = \text{Work } W = F \times s = (8/3)s$$

$$s = t = 666 = 1/G = 1/E$$

$$t = 1/E$$

$$1: 9.25 \text{ Elevating Pump [1] pg 173}$$

$$9.25 \text{ft} / 3.281 \text{ft/m} = 281.9$$

$$\sqrt{[P1 - P2]} = \sqrt{281.9} = 167.9$$

$$\text{Superforce} = -2.67$$

$$-F+1=F/A$$

Let Area A=1

$$-F+1-F=0$$

$$F=t=\sin \theta$$

$$2t-1=dE/dt$$

$$t^2-t-1=E$$

1:3.5 circulation Pump [1] pg 173

$$3.5/3.281=1.0667$$

$$1.0667/M=1.0667/4=2667=SF$$

The "House of Osiris and Lord of the Underground Tunnels" [1] pg 170 =Osiris=Oshara=HARAOPPAN =pHARAoh

The House of Hara is Marchir (Merer= Melgraphra, a city from 10,000 BCE in India). Machir of Narbonne was the founder of the French Throne. This author's YDNA matches the O'Hara's and the Coens (RL21= L226. Irish Type 3)

The Pyramid was constructed of Granite. Granite has a modulus of elasticity of 40GPa which affects its natural frequency.

$$8/3 / 6.6666=0.40$$

$$T \text{ Period} = 1/40=250 \text{ Cf } 251 \text{ for the Universe.}$$

$$\text{Stones were } 47'' \times 9'' \times 56.75'' = 24005.25 \text{ cu in} \\ /0.40=60013.125=1.602=1/2.669=E$$

Coulomb's Eq=

$$F=q_1q_2/[4\pi \epsilon_0] (1/r^2=1.602(1.602)/ [4\pi \times 1.602] (1/1/2)^2$$

$$=5.10597=Me-$$

$$5.1097/1.602=1/\pi=freq$$

$$E=\hbar v$$

$$-1.25=6.626v$$

$$v=0.18865=t=freq$$

$$\text{GMP: } E=-1.15306=1/0.867=1/\sin 60^\circ$$

$$t=\sin 60^\circ=\sqrt{3}/2$$

$$2t=\sqrt{3} \text{ eigenvector}$$

$$2(1/2) = 1=\sqrt{3}$$

$$\sqrt{3^2}-\sqrt{3}-1=2.667$$

## Conclusion

In short, the Great Pyramid at Gaza is a huge scientific experimental apparatus to detect the Superforce. I have an Engineering degree from a university UNB ranked 74th in the world tied with Cornell in New York. I could not have come up with the design of the Pyramids designed by engineers 5000 years ago. I have been able to reconstruct its physics thanks to Malkowski's book. I did figure out Astrotheology entirely on my own coupled with all my guided reading. And it only took 8 years! The engineers who built the pyramids were equal or better than engineers who put man on the Moon. When our civilization is lost, successors may try to figure out how we got an American flag on the Moon. Certainly, we didn't send a rocket! It's a grad mistake to think the Pyramids were tombs although some Pharaoh's may have been buried there. This is my crowing work. I won't be doing anymore papers. I must have written 2667 papers.

## References

1. Malkowski E W (2010) Ancient Egypt 39,000 BCE. Toronto: Bear & company.
2. Silva M, Zohar (2021) The Ultimate Guide to Understanding the Most Important Work on Kabbalah and Jewish Mysticism. Bolton, Ontario, Canada: Amazon.
3. Wellman B (2022) Indus civilization. Bolton, Ontario, Canada: Amazon.



This work is licensed under Creative Commons Attribution 4.0 License

To Submit Your Article Click Here: [Submit Article](#)

DOI: [10.32474/JAAS.2025.10.000340](https://doi.org/10.32474/JAAS.2025.10.000340)



### Journal Of Anthropological And Archaeological Sciences

**Assets of Publishing with us**

- Global archiving of articles
- Immediate, unrestricted online access
- Rigorous Peer Review Process
- Authors Retain Copyrights
- Unique DOI for all articles